

# Mount Polley Community Update



## July 2024



- Message from the Mine Manager
- Tailings Management Success
- Community
- Remediation Update
- Engagement with Indigenous Partners
- Reclamation Update
- We're Hiring!
- Contact Us



## Message from the Mine Manager

I am pleased to share some exciting updates from Mount Polley Mine. Since we restarted operations activities in the fall of 2021, we've made significant progress. By June 2022, mill operations were back in full swing and by the fall we completed the full-scale commissioning of the mine. Throughout 2023, our focus was on making operations smoother, more effective and safer. Mount Polley metal production for the first quarter of 2024 was 7,355,191 pounds copper and 10,009 ounces gold, compared to 8,347,899 pounds copper and 10,349 ounces gold produced during the fourth quarter of 2023.

This year has been a year of stable production, that helps supply the copper that is required to enable the global transition to a low-carbon economy. Our success wouldn't be possible without the support and collaboration of our First Nations partners and the local community.

We're also excited about the ongoing exploration activities at the mine. A diamond drilling program which began on March 3, 2024, focuses on two goals. The first is to test for mineralization around the perimeter of the planned Springer Pit where there are gaps in the 3-dimensional mineralization model. The second goal is to follow-up on last year's successful drilling in the Springer zone by filling gaps in the drilling of the zone and by continuing to test the zone at depth. These efforts help us better understand the mineral deposits at Mount Polley and may potentially add to the Mount Polley mine life.

Permitting activities continue as we prepare applications to address key mine components through to the end of the mine's life. Our commitment to safety, environmental stewardship, and community support remains stronger than ever. We are proud of our dedicated Mine Rescue and First Aid Teams. Trained in firefighting, first aid, and rope rescue techniques, these teams play a crucial role in ensuring workplace safety. This year, they demonstrated their skills at the 66th BC Provincial Mine Rescue and First Aid Competition at Britannia Mine. Our Rescue Team placed 3rd in their zone, and our First Aid Team placed 2nd in their zone and 3rd overall. We thank them for their hard work and commitment to keeping our staff safe.

Supporting local economies is a core value for us. We rely heavily on local businesses and see significant monthly expenditures to the surrounding communities. We endeavour to hire locally and to support regional families to build our workforce. Of our current 343 employees, 309 are from nearby communities like Williams Lake, Quesnel, 100 Mile House, 150 Mile House, 108 Mile Ranch, Horsefly, Miocene, Likely, McLeese Lake, Riske Creek, Lac La Hache Alexis Creek and Forest Grove.

Mount Polley Mine is also proud to sponsor many local events and initiatives. This year we have supported several events including the Williams Lake Indoor Rodeo, the Heavy Metal Rocks program that introduces Grade 11 and 12 students to jobs associated with heavy duty equipment operations, as well as hosting the 3rd annual Mount Polley Fishing Derby. Our fundraising BBQs for the Mining for Miracles campaign benefits BC Children's Hospital, reflecting our commitment to giving back.

I want to extend my gratitude to each member of our team. Your hard work, resilience, and dedication are the driving forces behind our success. As we move forward, let's continue to work together, support one another, and strive for excellence in everything we do.

Warm regards,

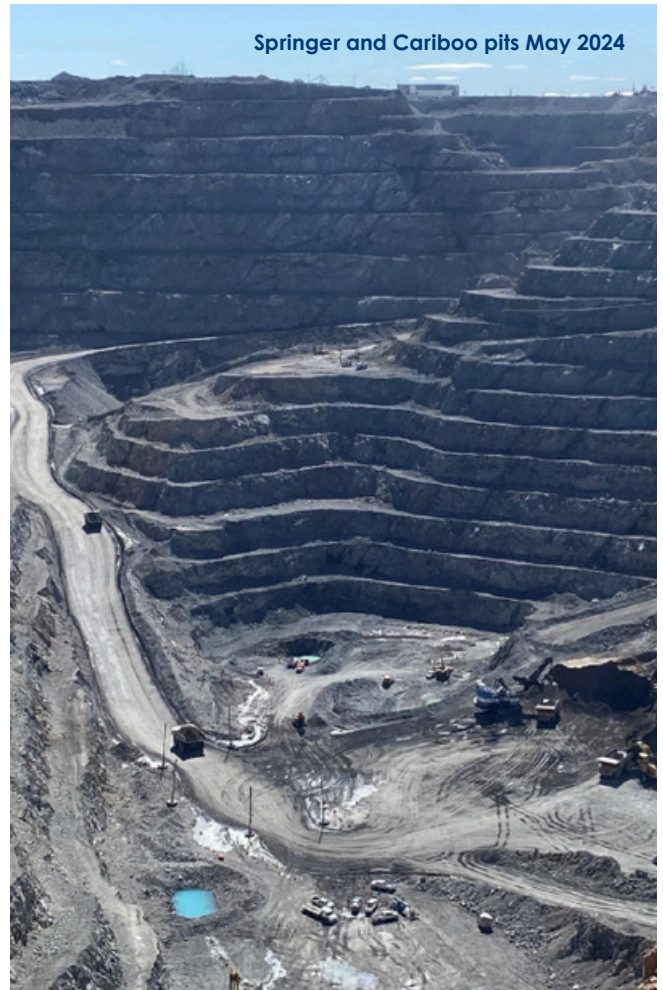
Kelly Parker  
Mine Manager, Mount Polley Mining Corporation





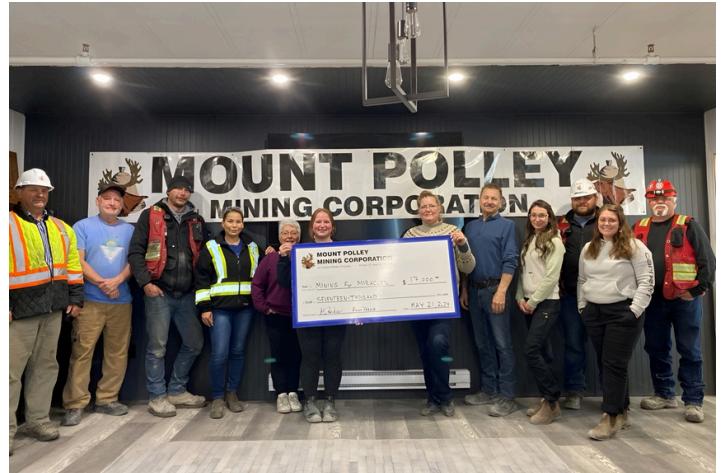
## Tailings Management Success

In May, we reached a significant milestone by completing the last deliveries of tailings from the Springer pit to the Southeast Rock Disposal Site. Mount Polley utilized a method of storing tailings called Dry Stacking. This process involves storing tailings in a dry, compacted form in designated cells atop the rock storage area. This innovative method not only reduces the environmental footprint, but it also enhances the stability and safety of our tailings storage.



## Community

Mount Polley is continually striving to foster strong community relationships through sponsorships and events. This year, we proudly hosted the 3rd annual Mount Polley Fishing Derby, with proceeds directed towards creating a new playground at Cedar Point Park in Likely. Additionally, our Mining for Miracles BBQ series raised \$8,500 for the BC Children's Hospital Foundation, which was matched by a donation from Imperial Metals.



## Remediation Update

Our commitment to environmental sustainability is further evidenced by the return of Polley Lake rainbow trout to Hazeltine Creek again this spring. Despite the drought and low water levels in the creek, spawning surveys indicate a healthy trout population, highlighting the effectiveness of our habitat restoration efforts and the resilience of the species. The peak count was 2271 adults and was conducted on May 8. This is another indication that the constructed habitat is functioning as intended and allowing for these life stage functions to occur.

Additionally, our wildlife monitoring program, which makes use of several game cameras situated in remediated areas, has been regularly capturing images of large mammals and other wildlife utilizing the restored habitat. This is further evidence that our efforts are successfully creating a thriving environment for local wildlife.



## Engagement with Indigenous Partners

Mount Polley operates on the traditional territory of the Secwépemc peoples and is dedicated to fostering meaningful partnerships with local First Nations. Recently, we hosted Elders and band members from the Williams Lake First Nation (WLFN) for a tour showcasing our remediation progress. The event, led by our Environmental Coordinator and Imperial Metals' President, included a lakeside lunch and cultural ceremony. We deeply value WLFN's insights and support, emphasizing our commitment to collaborative restoration and sustainable mining practices.



## Reclamation Update

We are expecting to resume progressive reclamation projects in 2024, starting with East Rock Disposal Site. This involves re-contouring the dump face to ensure long term physical stability and to minimize soil movement, following which a layer of soil and soil amendments is applied.



**Join the Mount Polley Family.  
Make Williams Lake Home!**



**Join Us! Visit [mountpolley.com/careers](http://mountpolley.com/careers)**

Mount Polley is always looking for talented individuals to join our team. We offer a variety of roles from administrative to technical and trades, with competitive salaries, benefits and opportunities for training and advancement. If you're interested, please contact [hr@mountpolley.com](mailto:hr@mountpolley.com) or visit our careers page at [mountpolley.com/careers](http://mountpolley.com/careers).

## Contact Us

**Mount Polley Mining Corporation**  
*an Imperial Metals company*

Box 12, Likely, BC V0L 1N0

Telephone: 250.790.2215

Email: [inquiries@imperialmetals.com](mailto:inquiries@imperialmetals.com)

### KEY STAFF:

**Kelly Parker**, *Mine Manager*

**Judith Gagnon**, *HR Superintendent*

**Gabriel Holmes**, *Environmental Coordinator*

### FOLLOW US ON:

[mountpolley.com](http://mountpolley.com)

[www.facebook.com/mountpolley/](http://www.facebook.com/mountpolley/)

[imperialmetals.com](http://imperialmetals.com)

### OTHER RESOURCES:

[BC Mine Information Page](#)

[BC Ministry of Environment Natural Resource and Enforcement Database](#)

If you have any questions regarding the Community Update, please email Gabriel Holmes at [gabriel.holmes@mountpolley.com](mailto:gabriel.holmes@mountpolley.com)